

### Computing

We will be continuing to build our understanding of algorithms in the context of creating and debugging simple programs.

The children will learn how to program a Bee-Bot and apply their knowledge of position and direction.



### RE



This half term we will focus on Christianity and the significance of the Easter story.

### PSHE

We will continue with our Jigsaw learning with Jigsaw Jack, our new focus area being "Healthy Me".



### Maths

tens	ones
1	8

We aim to adopt a very exploratory and discovery-based approach to Maths, where the children can build their understanding of mathematical concepts through experience.



Our main areas of focus for this half term are division, fractions and position and direction

We are always working on our number bonds to 10 and counting in 2's, 5's and 10's, so any help with this would also be very helpful.

### Science

As part of our learning journey in DT, we will build on our learning from the Autumn term and develop our knowledge of everyday materials.

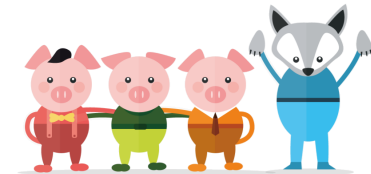
We will think about the different materials that are used for building houses and the properties they have.

We will be working scientifically by gathering and recording data to help us with our DT projects.



### English

We will be looking at the key features of a traditional tale during our English learning. Our learning journey will eventually lead us to write our own traditional stories inspired by our model text, "The Three Little Pigs."



Our main curriculum aims will focus on orally rehearsing our sentences before writing them, using our Fred talk to sound out unfamiliar words, and remembering our full stops, capital letters, and finger spaces between words.

We will also continue to develop our use of adjectives and extending our sentences using conjunctions (e.g. and, because)

We would encourage the children to write at home if they would like, but even picking out these features (e.g. finger spaces, capital letters and full stops) when reading at home would be a good reminder for them..

# Curriculum Information Spring 2



## Year 1 Team

Mr Warden

Mrs Champion

### Reading

It is so vital that your child is reading regularly at home to apply the skills they are developing during Guided Reading sessions at school.



Rereading books is also important to improve fluency and expression. Your child's book will be changed on a Monday and a Thursday by a member of the Year 1 team.

### Home Learning

In addition to reading at home, the children will continue to bring home their spelling logbook. This indicates which sounds have been introduced during the week and we encourage the children to keep having a go at these and those from previous weeks.



You will also receive a separate home learning ideas sheet to give you and your child some inspiration with our topic in mind. These are designed to encourage your child to engage with their learning both in school and at home.

### PE

Please continue to ensure that your child has a full P.E. , and each item is clearly named.

Our PE focuses for this term are:

Tuesday — Fitness

Thursday — Gymnastics



### Geography

Within our geography learning, our focus will be on map work, human geographical features and the geography of the school, and our local area. We will begin by exploring the differences and similarities of the geographical features of Corfe Mullen from the past and present.



We will develop our understanding of human and physical geographical features. We will apply this understanding by using geographical terminology to label the human geographical features of Corfe Mullen.

We will study simple maps of our school's surrounding area, using map symbols and a key to represent different landmarks. We will conclude our learning journey by creating our own maps of a fantasy town.



### DT



The Three Little Pigs need our help! This half term in DT, our challenge will be designing and building a house for the three little pigs to protect them from the Big Bad Wolf. Our models will need to have waterproof roofs and be stable enough to withstand the Wolf's puff.

We will start our learning journey by researching the features and materials that make houses strong, stiff and stable. We will then start the planning phase of the learning journey, working in teams to design and plan a model.



Following these plans, we will make our models with a technical focus on joining techniques and developing our teamwork skills. We will finally test our finished products and evaluate their success.